



**Halon Al-Masrya**

**هالون المصرية**

لانظمة الإطفاء الحديثة

# CATALOG TECHNICAL

**YOUR SAFTY  
IS OUR PRIORITY**



**Halon Al-Masrya**

هالون المصرية

## **| About Us**

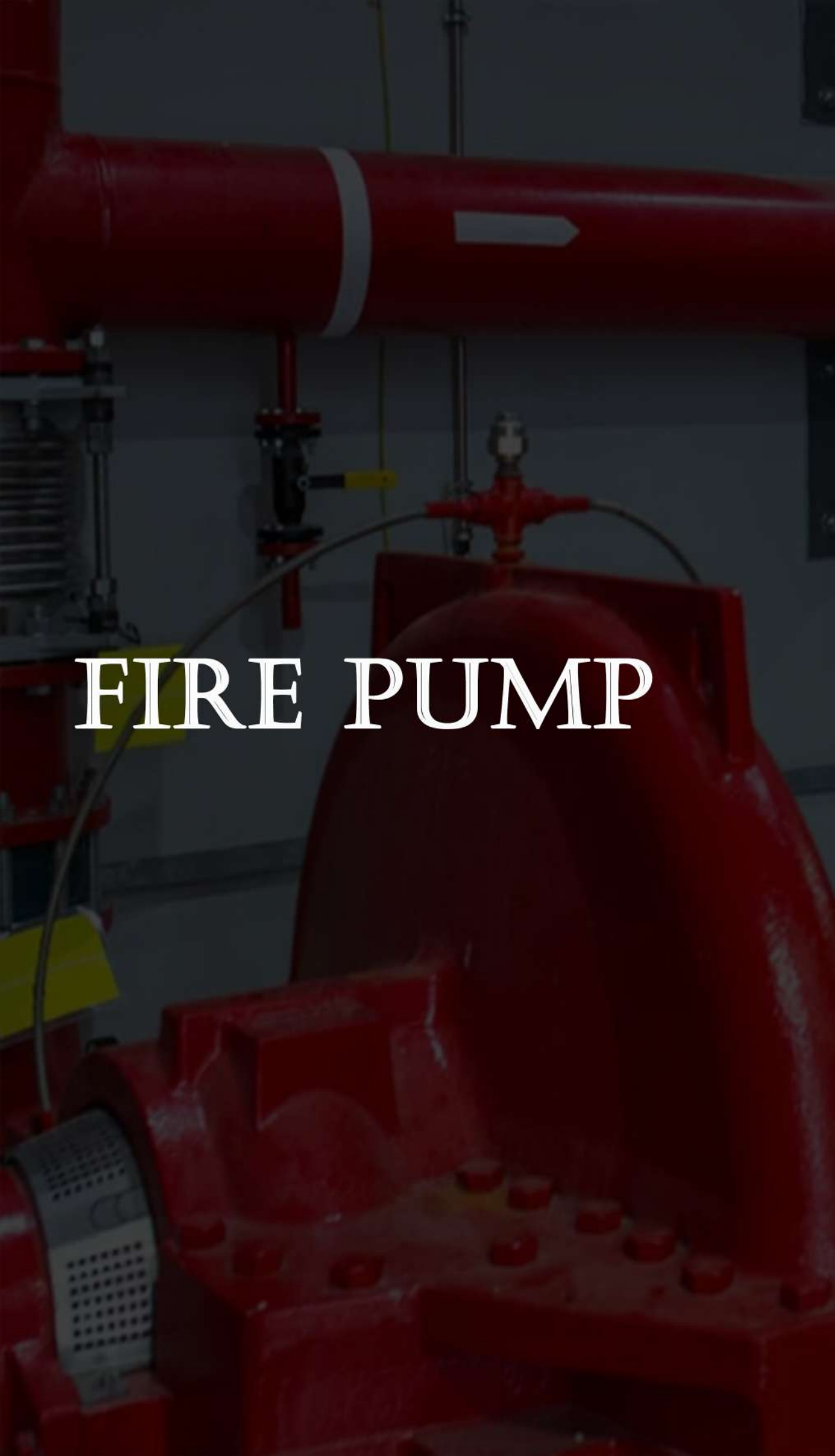
“Halon Al-Masrya” is a modern company that produces industrial safety products such as (pumps and fire fighting products).

We rely on the latest technology and skilled engineers with competitive prices to be suitable for all our customers.

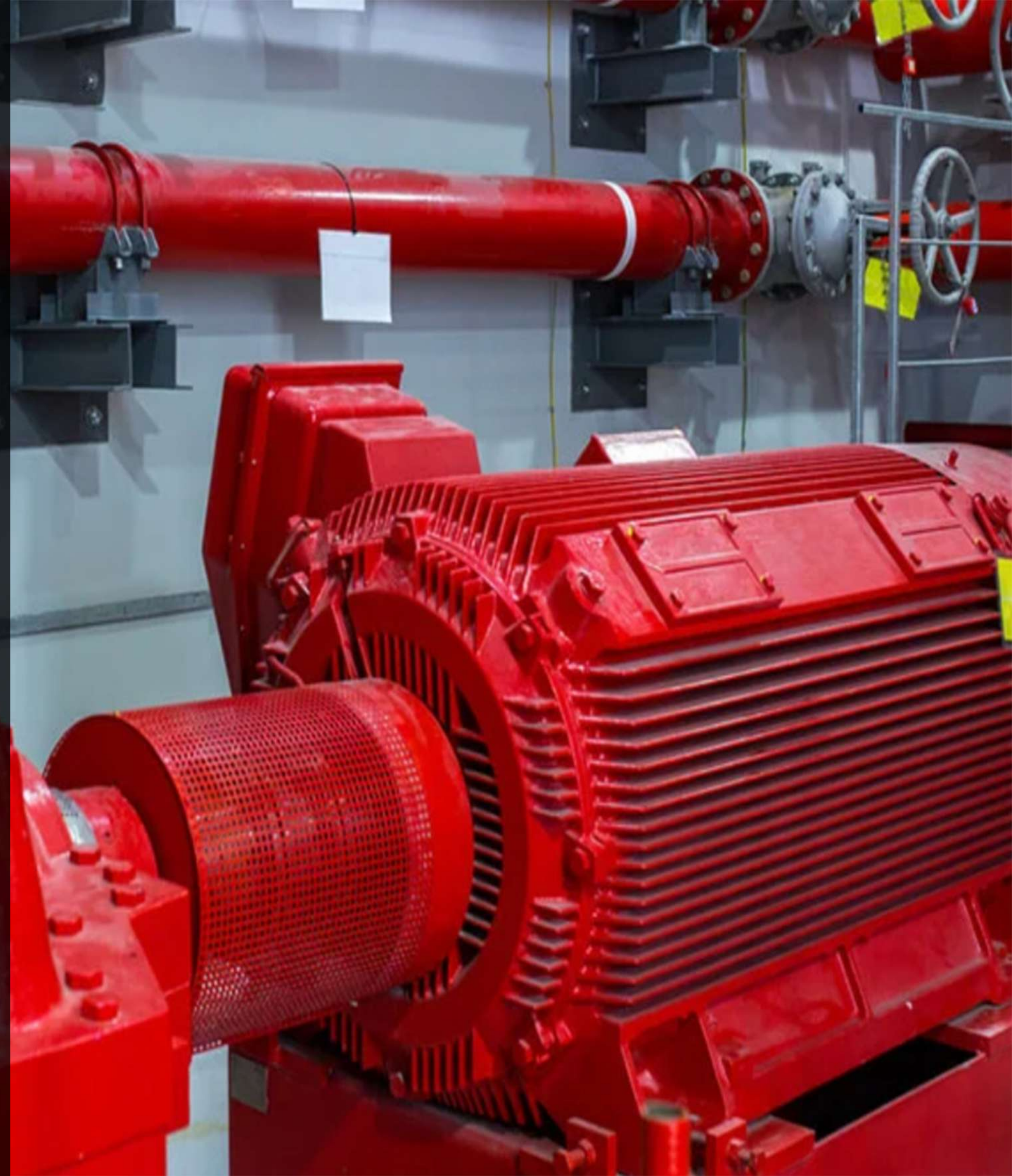
We always cooperate with our customers in a friendly environment.

Our main slogan is “Your safety is our priority”



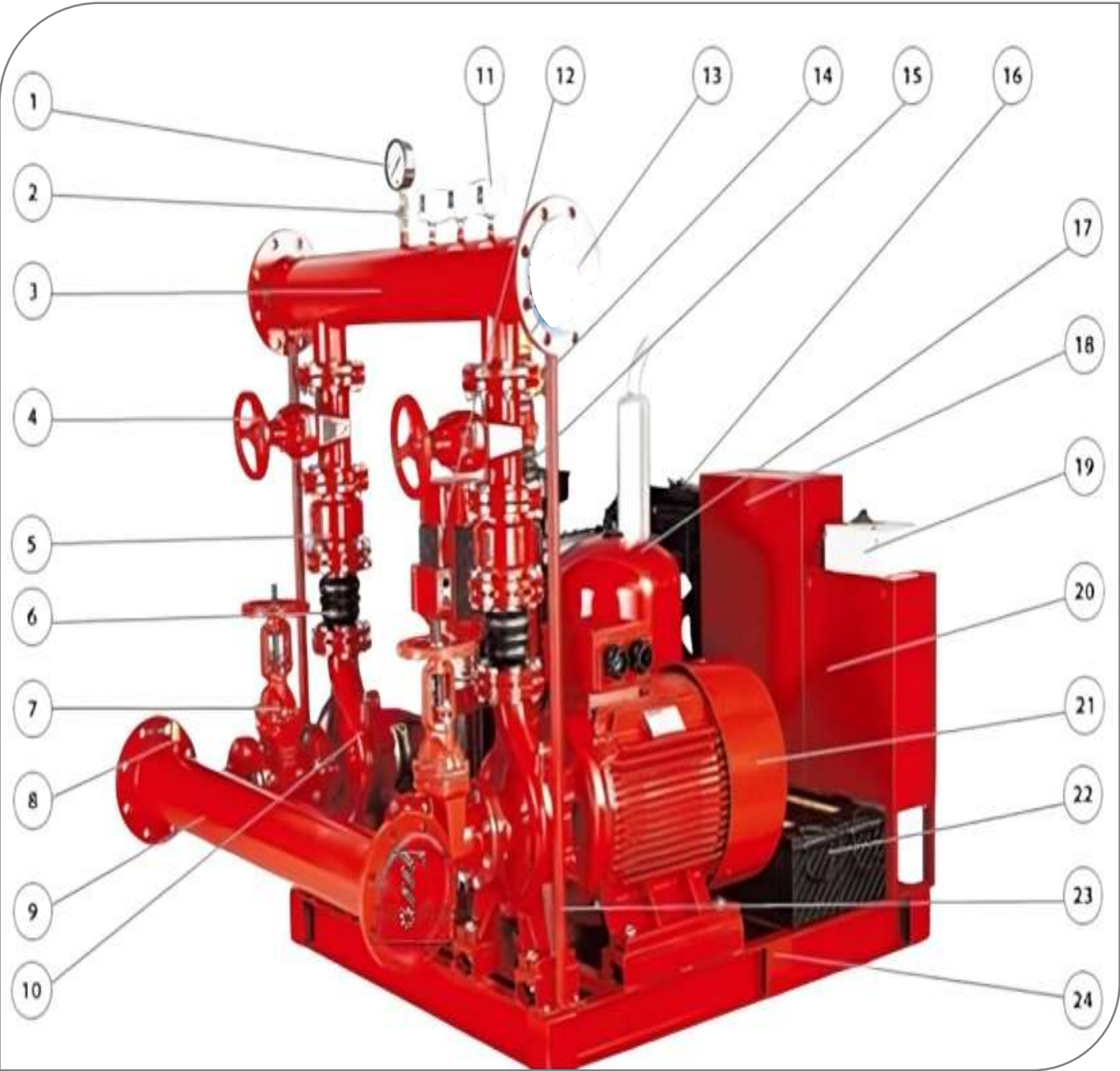


# FIRE PUMP





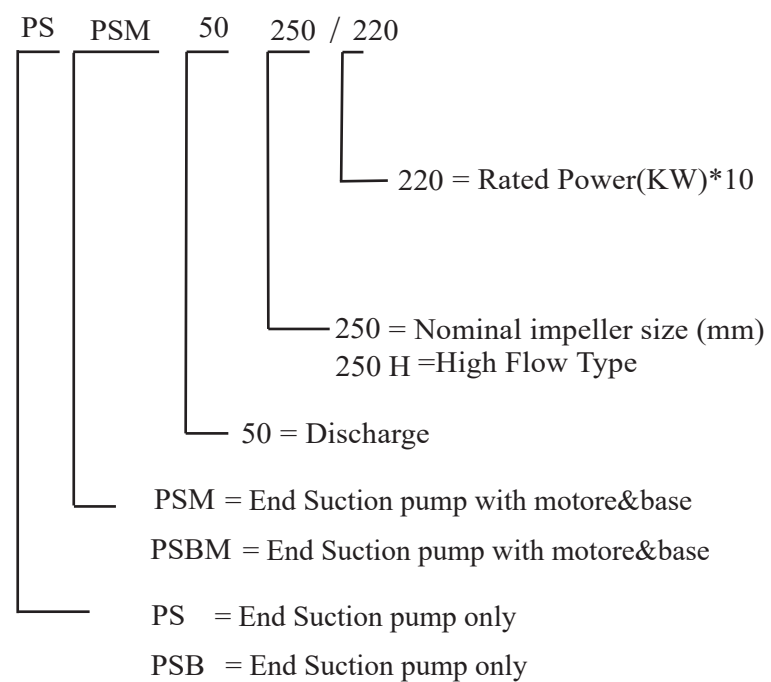
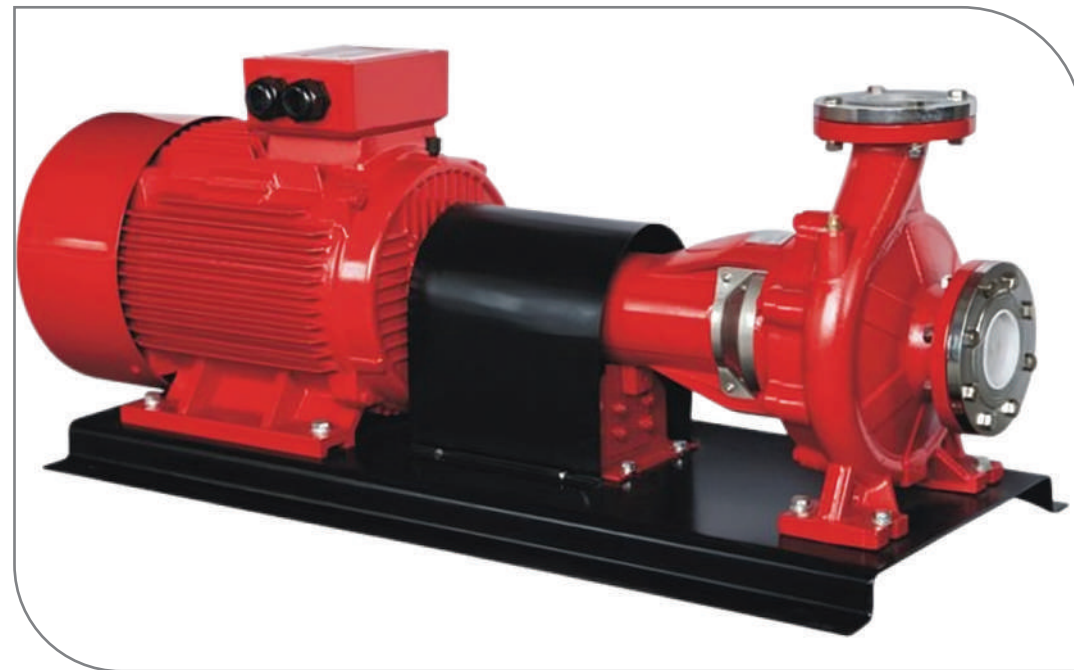
# Fire Pump



## TECHNICAL SHEET

NO.	Description	Material
1	Pressure Gauge	0-16bar
2	Relief Valve	Brass
3	Discharge Pipeline	Carbon Steel
4	Gate Valve	Ductile Iron
5	Check Valve	Ductile Iron
6	Flexible Joint	Rubber
7	OS&Y Valve	Ductile Iron
8	Relief Valve	Brass
9	Suction Pipeline	Carbon Steel
10	Diesel Pump	Standby Supplier
11	Pressure Switch	0-16bar
12	Jockey Pump	Mainyain Supplier
13	Jockey Check Valve	Brass
14	Jockey Gate Valve	Brass
15	Flexible Joint	Rubber
16	Diesel Engine	Internal Combustionr
17	Pressure Tank	Iron/EPDM membrane
18	Electric Controller	Dol/ Star-delta
19	Jockey Controller	Dol
20	Diesel Controller	Dol
21	Electric Pump	Main Supplier
22	Batteries	Main/Standby
23	Support Rod	Iron
24	Base	Iron

Electric Pump to Primarily Provide Flow and Pressure in The System



## Description

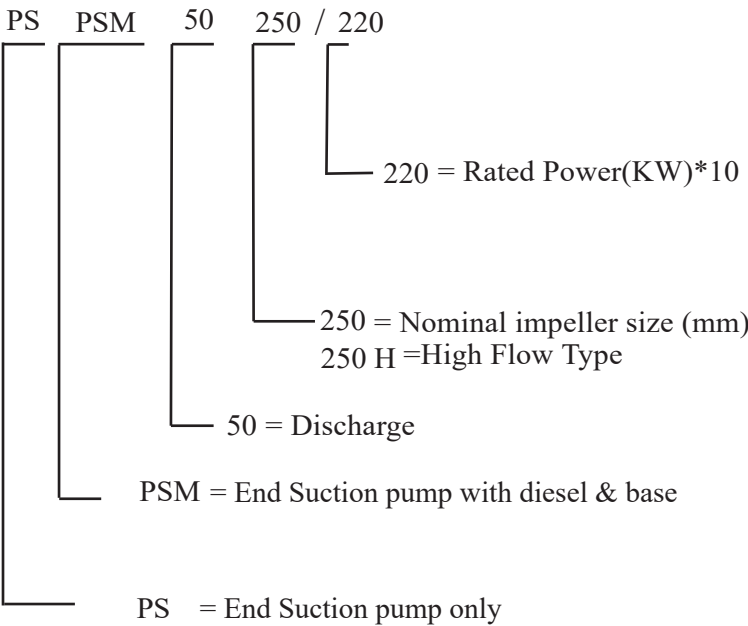
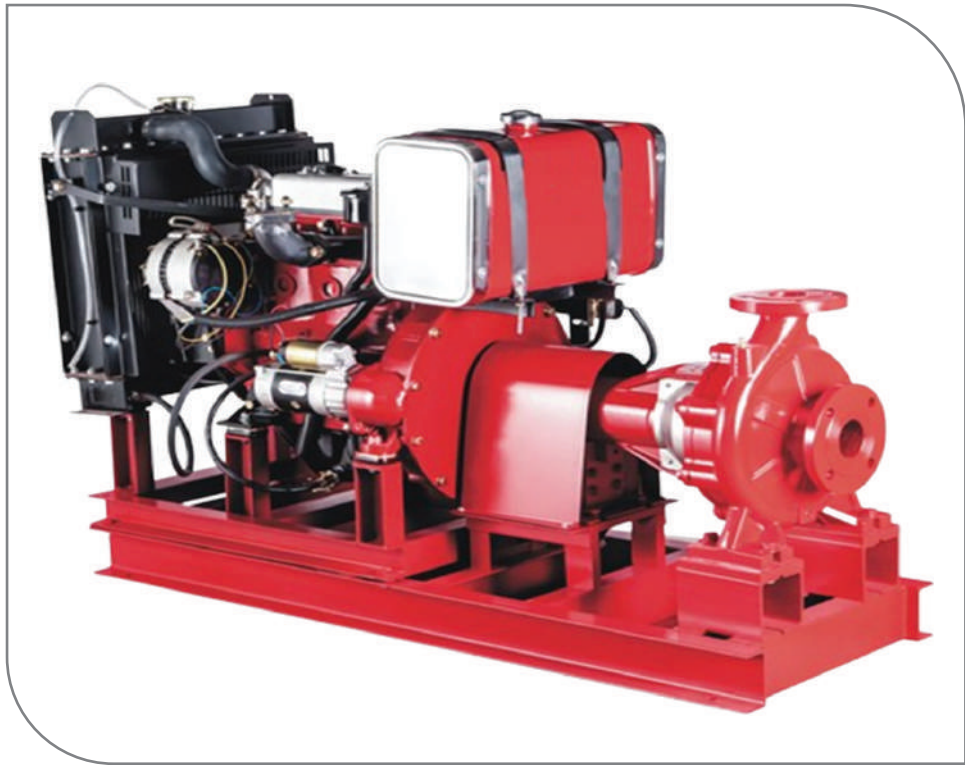
- According to NFPA20, centrifugal pump shall be of the overhung impeller design with close or separate coupled end suction type
- Pump capacities are based on the calculated system demand
- Fire pump shutoff head should not exceed 140% of the nominal value
- Recommended the maximum system demand flow correlate to a point on pump curve between 90% to 140% of the pump capacity

## TECHNICAL SHEET

Model	PSD	
Capacity	0-1000	m <sup>3</sup> /h
Head	0-164	m
DN	32-150	mm
Speed	3000	rpm
T max	120	c
Power	6.3-300	kw
Casing	Grey cast Iron	
Impeller	AISI 304/Brass	
Shaft	AISI 304	
Shaft Seal	Mechanical Seal	
Bearing	Grease Lubrication Rolling Bearing	

# Diesel Pump

Diesel Pump as Standby Provider Flow and Pressure in The System



## Description

- Diesel engines have proven to be very reliable and effective
- Diesel engines are currently the only type of Internal combustion engine permitted by NFPA 20
- Each engine shall be provided with two storage battery units according to NFPA20
- Diesel engines for fire pump is of the compression ignition type
- Advanced direct injection and combustion system

## TECHNICAL SHEET

Model	PSD	
Capacity	0-1000	m <sup>3</sup> /h
Head	0-164	m
DN	32-150	mm
Speed	3000	rpm
T max	120	c
Power	6.3-300	kw
Casing	Grey cast Iron	
Impeller	AISI 304/Brass	
Shaft	AISI 304	
Shaft Seal	Mechanical Seal	
Bearing	Grease Lubrication Rolling Bearing	

# Jockey Pump

Jockey Pump To maintain the necessary Pressure In The System



PVT(S) 32 30 2

2 = small impeller number

30 = stage \* 10 (PVT32-PVT90)  
stage \* 1 (PVT1-PVT20)

32 = Rated Flow (m<sup>3</sup>/h)

PVT = Common type vertical multistage pump  
PVS = pump with flow passage components in SS304

## Description

- The jockey pump is designed to maintain the pressure on the fire protection system between preset limits when the system is not flowing water.
- Rated capacity not less than any normal leakage rate.
- Discharge pressure sufficient to maintain the desired fire protection system pressure.
- YE3 high efficient motor, with protection IP55 class F

## TECHNICAL SHEET

Model	PVT/S
Capacity	0-110
Head	0-305
DN	25-100
Speed	2900
T max	120
Power	0.37-45
Voltage	220/380/400/440
HZ	50
Class	Class F/IP 55
Duty	S1 Continuous
Casing	Grey cast Iron
Impeller	AISI 304/Brass
Shaft	AISI 304
Shaft Seal	Mechanical Seal
Bearing	Grease Lubrication Rolling Bearing



## Controller



## Other Accessories



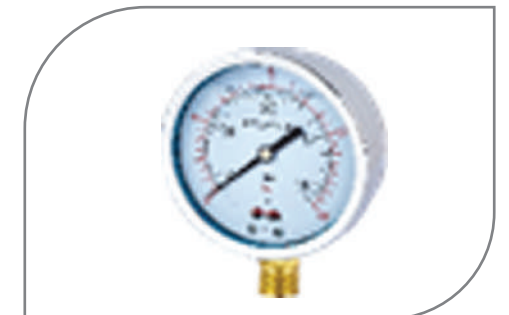
Section and discharge pipe  
Suction and refoulement line



Brass Gate Valve    Brass Check Valve



Pressure Switch



Pressure Gauge

## Description

- Equipped with Smartgen display screen, integrates digitalization, intellectualization and network technologies for precise data measurement, alarm protection, remote control, measuring and communication
- DOL or Star Delta starter
- All controllers completely assembled, wired, and tested Self-acting to start, run, and protect the driver
- Automatic or manual operation options



## Other Accessories



Gate Valve



Check Valve



Pressure Tank



Fuel Tank



Flexible Joint



OS&Y Valve



Muffler



Radiator



Coupling



Battery



Air Filter



Solenoid

# FIRE CABINETS





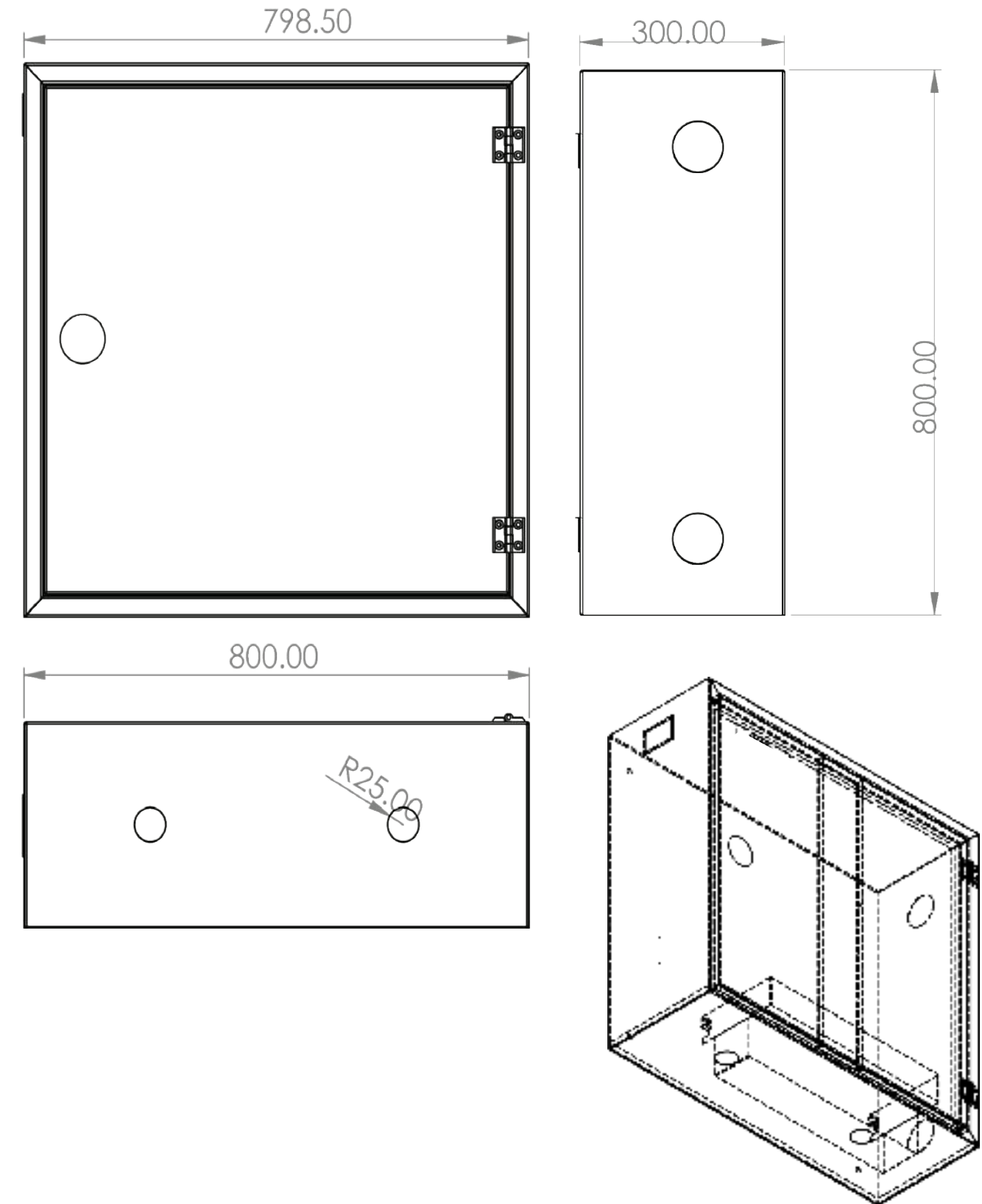
## Single Fire Cabinets

### Description

- Cabinet material made of Electro Galvanized sheet.
- Locking of cabinet is either key operated or round handle cam latch.
- Cabinets are available either in surface mounted or recessed mounted type.
- Cabinet containing Hose and Fire Extinguisher Stand
- Door can open up to 180 degrees
- There are little holes in the bottom of the box to drain the leaking water.

### Full Mild Steel Cabinets :

Dimension	800*800*300
Materials	Mild Steel
Thickness	1.5 mm
Insulation	Surface / Wall Mounted
Capacity	Manual Or Automatic Swing, Fixed Hose Reel 1" Or 1.5"
Finish	Red Powder coated



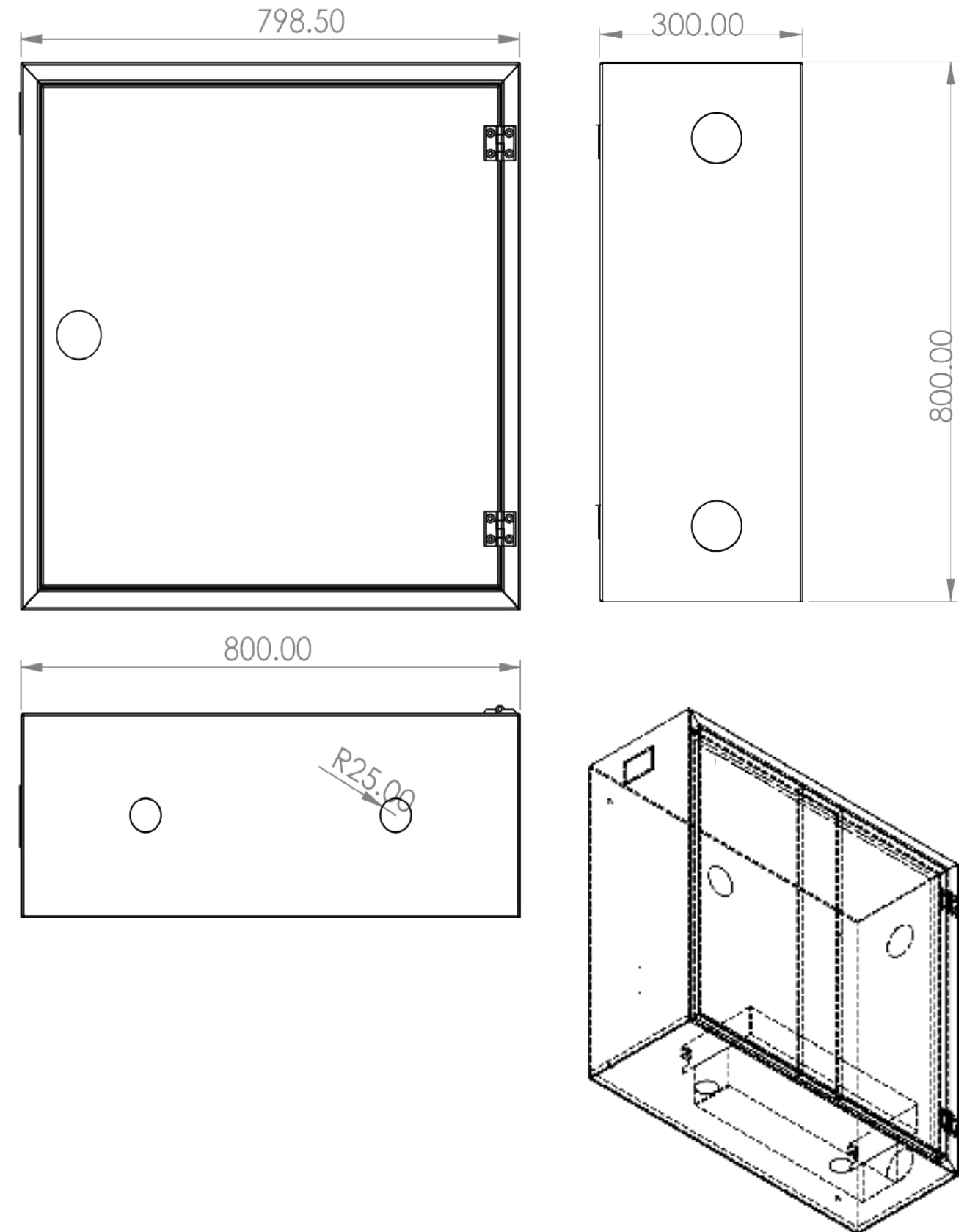
# Single Fire Cabinets

## Description

- Cabinet material made of Stainless Steel Sheet
- Locking of cabinet is either key operated or round handle cam latch.
- Cabinets are available either in surface mounted or recessed mounted type.
- Cabinet containing Hose and Fire Extinguisher Stand
- Door can open up to 180 degrees
- There are little holes in the bottom of the box to drain the leaking water.

## Full Stainless Steel Cabinets

Dimension	800*800*300
Materials	Stainless Steel
Thickness	1.5 mm
Insulation	Surface / Wall Mounted
Capacity	Manual Or Automatic Swing, Fixed Hose Reel 1" Or 1.5"





# Double Fire Cabinets

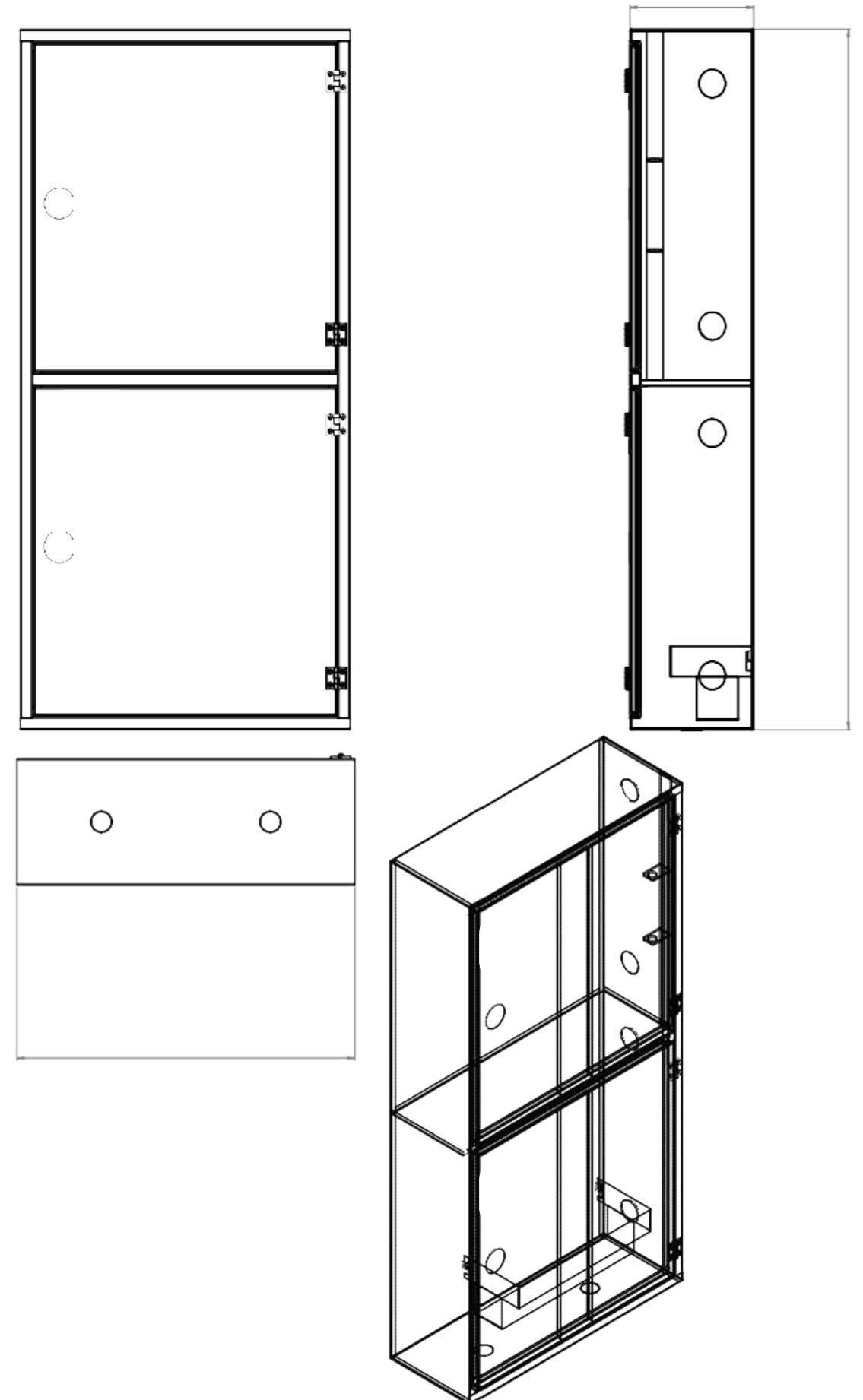
## Description

- Cabinet material made of Electro Galvanized sheet.
- Locking of cabinet is either key operated or round handle cam latch.
- Cabinets are available either in surface mounted or recessed mounted type.
- Cabinet containing Hose and Fire Extinguisher Stand
- Door can open up to 180 degrees
- There are little holes in the bottom of the box to drain the leaking water.



## Full Mild Steel Cabinets :

Dimension	1600*800*300
Materials	Mild Steel / G.I
Thickness	1.5 mm
Insulation	Surface / Wall Mounted
Capacity	Manual Or Automatic Swing, Fixed Hose Reel 1" Or 1.5"
Finish	Red Powder coated



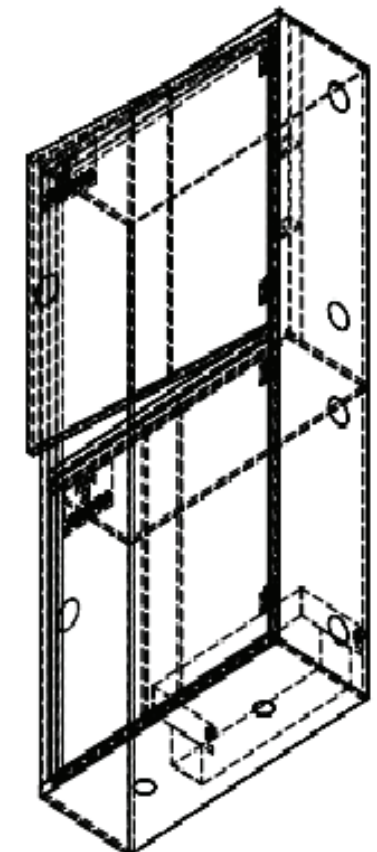
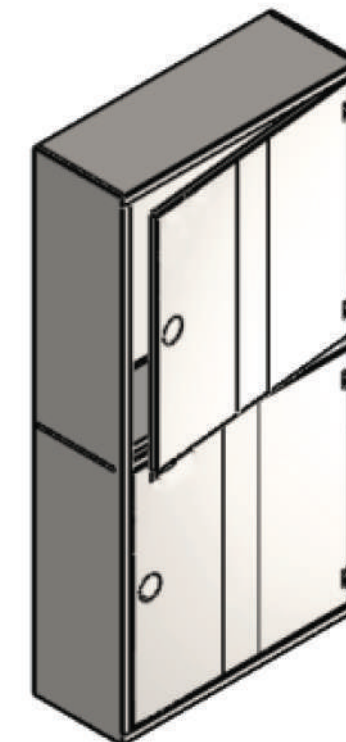
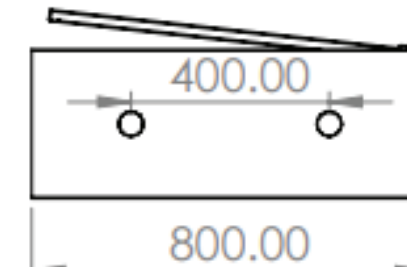
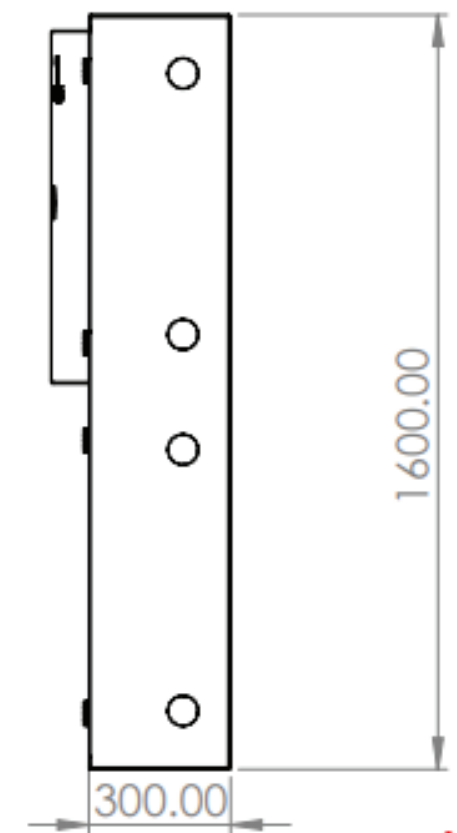
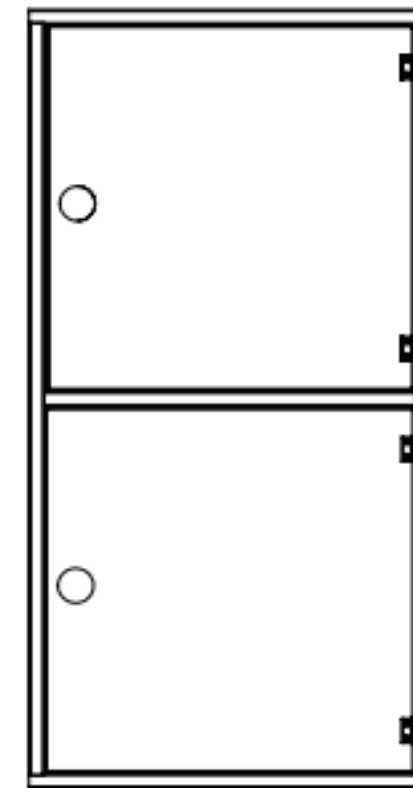
# Double Fire Cabinets

## Description

- Cabinet material made of Stainless Steel Sheet
- Locking of cabinet is either key operated or round handle cam latch.
- Cabinets are available either in surface mounted or recessed mounted type.
- Cabinet containing Hose and Fire Extinguisher Stand
- Door can open up to 180 degrees
- There are little holes in the bottom of the box to drain the leaking water.

## Full Stainless Steel Cabinets:

Dimension	1600*800*300
Materials	Stainless Steel
Thickness	1.5 mm
Insulation	Surface / Wall Mounted
Capacity	Manual Or Automatic Swing, Fixed Hose Reel 1" Or 1.5"





## Fire Hose Cabinet ( Accessories)

### Fire Hose



Hose Diameter and Length	64 mm * 30 m / 38 mm * 30 m
Fabrication	Flat nylon hose with Internal rubber lining
Optimum Working Pressure Range	17 bar
Hose Bursting Pressure	50 bar
Hose Coupling	Equipped with instantaneous coupling BS 336,64 mm



### Fire Hose Reel

Diameter	650 mm / 580 mm
swinging range	0-180
material	steel according to DIN 1623
Paint Finish	Surface treatment and 100% Polyester Coating
Water Way	Manual Valva For Hose Reel
Water Way Material	Nickle-Chrome Plated Brass
Water Way Diameter	1 inch

### Water branchpipe for hose



Diameter	64 mm / 38 mm
Material	High Strength aluminium alloy
Operation Mode	Full jet
Working Pressure Range	Upto16 bar
Max. Output	215 l/min when the ball valve is completely opened
Max. Throw Range	27 m. nozzle pressure 6 bar
Coupling Type	2.5 inch instantaneous coupling BS 336



### Landing Valves ( Fire Valves ) for hose

Diameter	64 mm / 38 mm
Inlet thread	G 2.5 A
Outlet Inst female	2.5 " -Alu
Optimum Working Pressure Range	17 bar
Weight (kg)	2.700
Coupling Type	2.5 inch instantaneous coupling BS 336

# POWDER FIRE EXTINGUISHER





# Powder Fire Extinguisher



## Description

- Brand Name: SAFEWAYFIRE
- External epoxy paint adds extra protection to with stand extreme temperature
- Product Description: Sticker label or screen printing
- Valve with CE approval to ensure reliability and optimizes efficiency
- 23mm series of diaphragm pressure gauge with EN3 approval
- Listed extinguisher can be with wall bracket/special specification bracket to choice available
- Listed cylinder with CE mark

## TECHNICAL SHEET

Model No	MFZL-3
KM No.	KM 784887
Powder agent	40%ABC
Out-Dia	130mm
Cylinder Height	335mm
Powder weight	3Kg
Thickness	1.2mm
Temperature Range	-30~+60°C
MAXW.P.	18bar
Test pressure	25bar
Material	Dc01
Carton Size	14.5*14*45CM/PC
Gross weight	6.2KG

# Powder Fire Extinguisher



## Description

- Brand Name: SAFEWAYFIRE
- External epoxy paint adds extra protection to with stand extreme temperature
- Product Description: Sticker label or screen printing
- Valve with CE approval to ensure reliability and optimizes efficiency
- 23mm series of diaphragm pressure gauge with EN3 approval
- Listed extinguisher can be with wall bracket/special specification bracket to choice available
- Listed cylinder with CE mark

## TECHNICAL SHEET

Model No	MFZL-6
KM No.	KM 784887
Powder agent	40%ABC
Out-Dia	160mm
Cylinder Height	444mm
Powder weight	6Kg
Thickness	1.2mm
Temperature Range	-30~+60°C
MAXW.P.	18bar
Test pressure	25bar
Material	Dc01
Carton Size	17.5*17*55CM/PC
Gross weight	9.7KG

# Powder Fire Extinguisher



## Description

- Brand Name: SAFEWAYFIRE
- External epoxy paint adds extra protection to with stand extreme temperature
- Product Description: Sticker label or screen printing
- Valve with CE approval to ensure reliability and optimizes efficiency
- 23mm series of diaphragm pressure gauge with EN3 approval
- Listed extinguisher can be with wall bracket/special specification bracket to choice available
- Listed cylinder with CE mark

## TECHNICAL SHEET

Model No	MFZL-9
KM No.	KM 784887
Powder agent	40%ABC
Out-Dia	180mm
Cylinder Height	510mm
Powder weight	9Kg
Thickness	1.5mm
Temperature Range	-30~+60°C
MAXW.P.	18bar
Test pressure	25bar
Material	Dc01
Carton Size	19.5*19*62CM/PC
Gross weight	14.7KG



# CO2 Fire Extinguisher



## TECHNICAL SHEET

Model	SNG01-27	SNG01-28	SNG01-29	SNG01-30
Type	2kg(A)	2kg(B)	2.3kg(A)	2.3kg(B)
Out-diameter (mm)	116	116	116	116
Volume(L)	3.0	2.67	3.45	3.1
Cylinder Length(mm)	384	350	431	392
Cylinder Weight(kg)	3.6	3.69	3.96	4.05
Working Pressure(Bar)	174	174	174	174
Test Pressure (Bar)	250	250	250	250
Min Wall-thickness(mm)	2.38	2.58	2.38	2.58

## TECHNICAL SHEET

Model	SNG01-31	SNG01-32	SNG01-33	SNG01-34	SNG01-35	SNG01-36
Type	3kg(A)	3kg(B)	4.5kg(A)	4.5kg(B)	5kg(A)	5kg(B)
Out-diameter (mm)	116	116	136	136	136	136
Volume(L)	4.5	4.0	6.75	6	7.5	6.7
Cylinder Length(mm)	540	488	590	533	647	584
Cylinder Weight(kg)	4.79	4.91	7.1	7.5	7.66	8.11
Working Pressure(Bar)	174	174	174	174	174	174
Test Pressure (Bar)	250	250	250	250	250	250
Min Wall-thickness(mm)	2.38	2.58	2.78	3.01	2.78	3.01

Model	SNG01-37	SNG01-38	SNG01-39	SNG01-40	SNG01-41	SNG01-42
Type	6.8kg(A)	6.8kg(B)	7kg(A)	7kg (B)	10kg(A)	10kg(B)
Out-diameter (mm)	154	154	154	154	154	154
Volume(L)	10.2	9.1	10.5	9.35	15	13.4
Cylinder Length(mm)	680	613	698	630	963	875
Cylinder Weight(kg)	10.41	11.02	10.63	11.28	13.96	15.1
Working Pressure(Bar)	174	174	174	174	174	174
Test Pressure (Bar)	250	250	250	250	250	250
Min Wall-thickness(mm)	3.14	3.40	3.14	3.4	3.14	3.40

# CO2 Fire Extinguisher Carbon Steel

## TECHNICAL SHEET

Model	SNG01-43	SNG01-44	SNG01-45	SNG01-46	SNG01-47
Capacity(Kg)	1.4	2	2.3	3	3.5
Volume(L)	2	3	3.45	4.5	5.25
Cylinder Height (mm)	330	431	483	600	477
Diameter (mm)	108	114	114	114	140
Cylinder Weight (Kg)	5	6	6.5	8	9
Working Pressure+20oC (Bar)	174	174	174	174	174
Test Pressure (Bar)	250	250	250	250	250
Min Wall-Thickness (mm)	4.2	4.5	4.5	4.5	5.0
Material	CK45				



Model	SNG01-48	SNG01-49	SNG01-50	SNG01-51	SNG01-52	SNG01-53
Capacity(Kg)	4	4.5	5	6	6.8	7
Volume(L)	6	6.75	7.5	9	10.2	10.5
Cylinder Height (mm)	470	527	576	700	751	771
Diameter (mm)	152	152	152	152	159	159
Cylinder Weight (Kg)	10	11.78	12.77	15	16.3	16.71
Working Pressure+20oC (Bar)	174	174	174	174	174	174
Test Pressure (Bar)	250	250	250	250	250	250
Min Wall-Thickness (mm)	5.0	5.6	5.6	5.6	6.3	6.3
Material	CK45					

# Aluminium Steel



## TECHNICAL SHEET

Model	SNG01-54	SNG01-55	SNG01-56	SNG01-57
Out-Diameter (mm)	133	175	175	203
Capacity(LB)	5	10	15	20
Volume(L)	3.4	6.8	10.2	13.5
Cylinder Height (mm)	370	430	600	600
Cylinder Weight (Kg)	3.1	6.0	7.8	10.5
Working Pressure+20oC (Bar)	207	207	207	207
Test Pressure (Bar)	311	311	311	311
Min Wall-Thickness (mm)	5.46	7.18	7.18	8.33
Material	AA6061			

# Powder Fire Extinguisher

## Description

The fire extinguishers are ANSI/UL/ULC Listed, Using high quality ABC dry powder. Pressure gases are nitrogen and helium.



## TECHNICAL SHEET

Model	SNG01-01	SNG01-02	SNG01-03	SNG01-04
Capacity (lb)	2.5LB	5LB	10LB	20LB
Fire Rating	A/10B/C	2A/40B/C	4A/60B/C	10A/120B/C
Discharge Time (Sec)	9	14	18	26
Height(mm)	380	405	482	593
Width(mm)	130	155	170	198
Diameter(mm)	85	110	143	180
Gross Weight (LB)	6	9	15 1/2	30 1/2
Working Pressure (Psi)	195	195	195	195
Test Pressure (Psi)	585	585	585	585
Temperature Range	-40°F~120°F			
Bracket	Wall Bracket and Marine Bracket			

## Description

The fire extinguishers are Kitmark BSI EN3 approved. Using high quality ABC dry powder. Pressure gases are nitrogen and helium.



## TECHNICAL SHEET

Model	SNG01-01	SNG01-02	SNG01-03	SNG01-04
Capacity (lb)	1	2	6	9
Volume(L)	1.4L	2.6L	7.8L	11.6L
Cylinder Height (mm)	280	315	444	510
Diameter(mm)	85	110	160	180
Gross Weight (Kg)	2	3.7	9.2	13.7
Working Pressure+200C (Bar)	16	16	16	16
Test Pressure (Bar)	29	29	29	29
Temperature Range	-30°C~+60°C			



## Wheeled Dry Powder



### TECHNICAL SHEET

Model	SNG01-58	SNG01-59	SNG01-60	SNG01-61	SNG01-62
Out-Diameter (mm)	320	320	320	406	406
Capacity(LB)	25	35	50	75	100
Volume(L)	30	41	59	89	125
Cylinder Height (mm)	500	640	940	866	1156
Cylinder Weight (Kg)	29.7	33	40	52	60
Working Pressure+20oC (Bar)	15	15	15	15	15
Test Pressure (Bar)	25	25	25	25	25

## Fire Extinguisher Wheeled Co2



### TECHNICAL SHEET

Model	SNG01-63	SNG01-64
Out-Diameter (mm)	152	219
Capacity(LB)	10	25
Volume(L)	15	40
Cylinder Height (mm)	1070	1360
Working Pressure+20oC (Bar)	15	15
Test Pressure (Bar)	225	225



SNG02-01

1Kg. 2Kg. 4Kg. 6Kg. 8Kg



SNG02-02

2Kg. 4Kg. 6Kg



SNG02-03



SNG02-04



SNG02-05

# Extinguisher Valve

SNG03-01

Inlet Thread	Outlet Thread	Gauge Connection Thread	Dip Tube Thread
M30x1.5	M16x1.5	NPT1/8 x 27	M16x1.5



SNG03-02

Inlet Thread	Outlet Thread	Gauge Connection Thread	Dip Tube Thread
7/8 x 14 NF	M10x1.5	NPT1/8 x 27	M10x1.5



SNG03-03

Inlet Thread	Outlet Thread	Gauge Connection Thread	Dip Tube Thread
M30x1.5	M14x1.5	NPT1/8 x 27	M14x1.5



SNG03-04

Inlet Thread	Outlet Thread	Gauge Connection Thread	Dip Tube Thread
M22x1.5	M10x1.5	NPT1/8 x 27	M14x1.5



SNG03-05

Inlet Thread	Outlet Thread	Gauge Connection Thread	Dip Tube Thread
M30x1.5	M14x1.5	NPT1/8 x 27	M14x1.25



SNG03-06

Inlet Thread	Outlet Thread	Gauge Connection Thread	Dip Tube Thread
M22x1.25	M14x1.5	NPT1/8 x 27	M14x1.5



SNG03-07

Inlet Thread	Outlet Thread	Gauge Connection Thread	Dip Tube Thread
M30x1.5	M14x1.5	NPT1/8 x 27	M14x1.5



SNG03-08

Inlet Thread	Outlet Thread	Gauge Connection Thread	Dip Tube Thread
11/4-12UNF	5/8-18UNF	NPT1/8X27	¢16





SNG03-09			
Inlet Thread	Outlet Thread	Gauge Connection Thread	Dip Tube Thread
G1	G1/2	NPT1/8 x 27	G1/2



SNG03-10			
Inlet Thread	Outlet Thread	Gauge Connection Thread	Dip Tube Thread
2"	3/4" BSP	NPT1/8 x 27	3/4" BSP



SNG03-11			
Inlet Thread	Outlet Thread	Gauge Connection Thread	Dip Tube Thread
M52x2	M27x1.5	NPT1/8 x 27	M27x1.5



SNG03-12			
Inlet Thread	Temperature	Gauge Connection Thread	Check Ualve
M30x1.5	68°C	NPT1/8 x 27	Cone Plug



SNG03-13			
Inlet Thread	Gauge Connection Thread	Temperature	Check Valve
M30x1.5	NPT1/8 x 27	68°C	Yes



SNG03-14			
Inlet Thread	Outlet Thread	Diptube Thread	Release Pressure Bar
NPT 3/4"	NPT 1/4"	M10 x 1	200 ± 10bar



SNG03-15			
Inlet Thread	Outlet Thread	Gauge Connection Thread	Dip Tube Thread
W27.8 x 14	W21.8 x 14	M10 x 1	200 ± 20bar



SNG03-16			
Inlet Thread	Outlet Thread	Gauge Connection Thread	Dip Tube Thread
W27.8 x 14	Φ21.8 x 14	M10 x 1	210 ± 15bar



# STEEL PANELS BOARD





## Description

- Cabinet material made of Electro Galvanized sheet or Stainless Steel Sheet
- Locking of cabinet is either key operated or round handle cam latch.
- Made of cold rolled steel sheets and coated with electrostatic paints
- Door can open up to 180 degrees.

## Specifications

Construction	Mechanically interlocked, hemmed vertical edge seam with inverted top and bottom channel welded to both face sheets
Materials	Cold rolled steel sheet confirm to ASTM or equivalent standard
Thickness	1.5 mm
Core Or Insulation	Rockwool
Application	Light to extra heavy duty use as per SDI
Irinmongery	Certified as per door test standard BS, EN and UL
Finish	Powder coated/ Wood finish/ Wet paint meets ANSI A 250.3 and ANSI A 250.10





# Electrical Panel

## Description

- Cabinet material made of Electro Galvanized sheet or Stainless Steel Sheet
- Locking of cabinet is either key operated or round handle cam latch.
- Cabinets are available either in surface mounted or recessed mounted type.
- Door can open up to 180 degrees.

## Specifications

Construction	Mechanically interlocked, hemmed vertical edge seam with inverted top and bottom channel welded to both face sheets
Materials	Cold rolled steel sheet confirm to ASTM or equivalent standard
Thickness	0.5 To 2.5 mm
Core Or Insulation	Rockwool
Application	Light to extra heavy duty use as per SDI
Irinmongery	Certified as per door test standard BS, EN and UL
Fire Rating	Up to 240 minutes
Finish	Powder coated/ Wood finish/ Wet paint meets ANSI A 250.3 and ANSI A 250.10



FIRE DOOR



## Fire Rated Single Leaf Doorset With / Without Vision Panel

### Description

Steel doors are of flush or glazed panel with steel stiffeners and laminated core design suitable for any commercial residential buildings, industrial, hospitals, hotels, schools, available with wide range of glass lights and with louver preparation ETC.

Different types of cores with single and double leaf configuration. Our doors and frames can be customized to the customer needs in terms of design.

- Seamless welded design - Vision panel - Bottom Louver/Grille
- Alternate Stainless-steel material
- Additional top panel
- Knock down frame /Groove frame with kerf gasket

### Specifications

Construction	Mechanically interlocked, hemmed vertical edge seam with inverted top and bottom channel welded to both face sheets
Materials	Cold rolled steel sheet confirm to ASTM or equivalent standard
Gauge/Door Thickness	45-80mm thick door with skin thickness 0.9 to 2mm
Core Or Insulation	Rockwool
Application	Light to extra heavy duty use as per SDI
Frame Gauge	1.5 to 4mm/ up to 500mm
Irinmongery	Certified as per door test standard BS, EN and UL
Fire Rating	Up to 240 minutes
Finish	Powder coated/ Wood finish/ Wet paint meets ANSI A 250.3 and ANSI A 250.10





# Fire Rated Double Leaf Doorset With / Without Vision Panel

## Description

Steel doors are of flush or glazed panel with steel stiffeners and laminated core design suitable for any commercial residential buildings, industrial, hospitals, hotels, schools, available with wide range of glass lights and with louver preparation ETC.

Different types of cores with single and double leaf configuration.

Our doors and frames can be customized to the customer needs in terms of design.

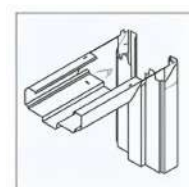
## Specifications

Construction	Mechanically interlocked, hemmed vertical edge seam with inverted top and bottom channel welded to both face sheets
Materials	Cold rolled steel sheet confirm to ASTM or equivalent standard
Gauge/Door Thickness	45-80mm thick door with skin thickness 0.9 to 2mm
Core Or Insulation	Rockwool
Application	Light to extra heavy duty use as per SDI
Frame Gauge	1.5 to 4mm/ up to 500mm
Irinmongery	Certified as per door test standard BS, EN and UL
Fire Rating	Up to 240 minutes
Finish	Powder coated/ Wood finish/ Wet paint meets ANSI A 250.3 and ANSI A 250.10

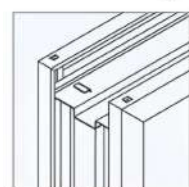


# STEEL DOOR

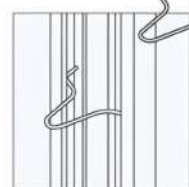




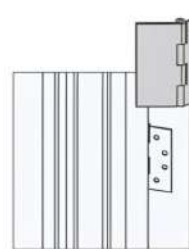
**Mitre joining tab installation.**



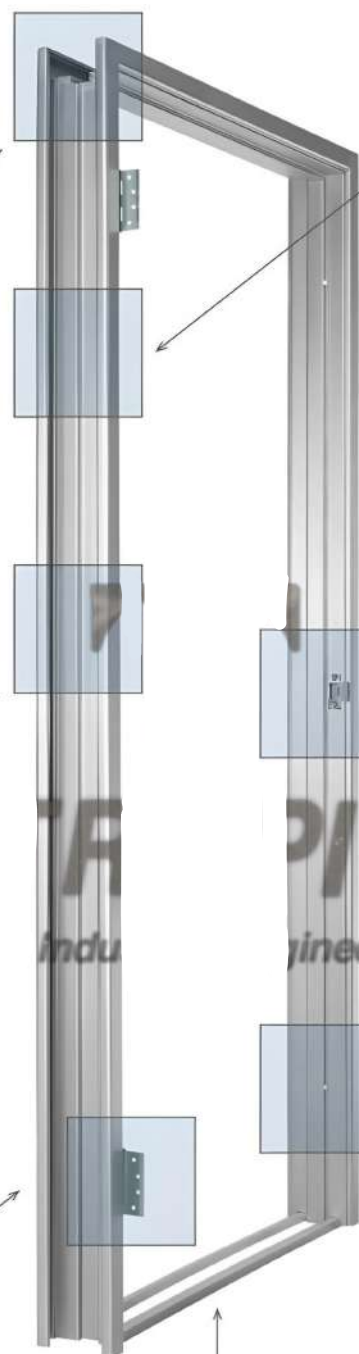
**Corner Detail**  
Factory assembled mitre corners are welded and ground smooth. For on-site assembly, bend tabs over.



**Brick Tie Detail**  
4mm wire brick ties are supplied for a secure and tight fit to the wall.

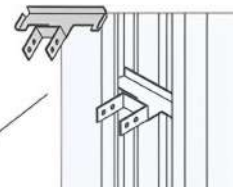


**Butt Hinge Detail**  
Two 100 x 75mm zinc plated butt hinges are spot welded to the frame.

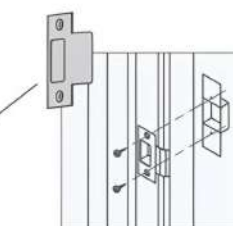


**Spreader Bars**  
Two temporary spreader bars to maintain a square and rigid frame. Wardrobe frames are supplied with permanent bottom rails attached.

BMT: 1.1mm  
Material: Annealed, Zinc coated steel  
Minimum Coating: G25 ZF100\*

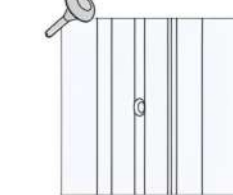


**Stud Frame Clip Detail**  
Stud frame clips are supplied to join unassembled frames to the studwork.

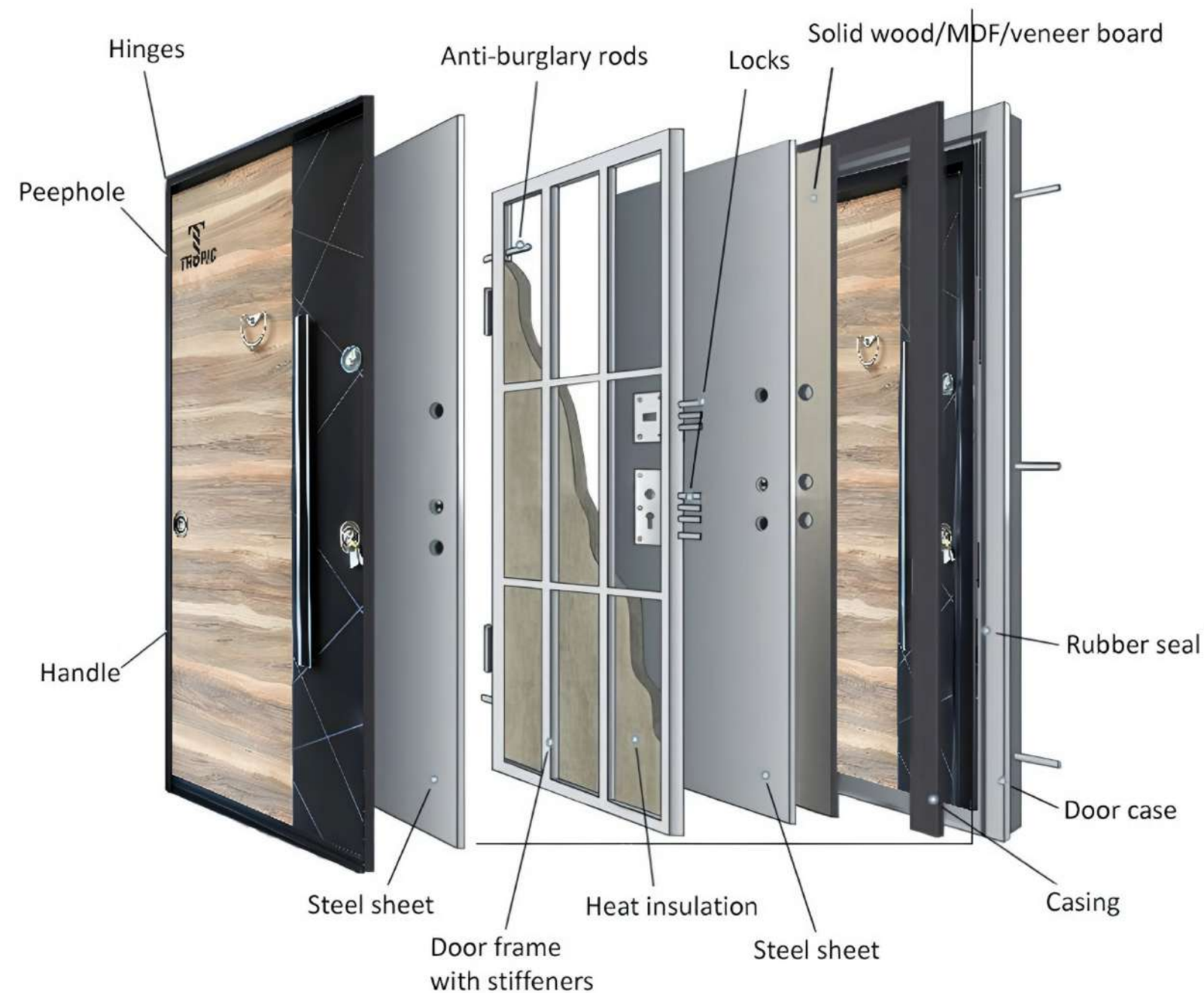


**Striker Plate Detail**  
Stainless steel striker plate, designed for a smooth closing operation.  
BMT: 0.8mm  
Grade: 304 2B Stainless Steel

The striker plate is fastened using two 6 x 12mm zinc plated self tapping screws.



**Rubber Buffer Detail**  
Rubber buffers provided to reduce any noise and vibration during use.





# وش مصفح 3D



code: 11 (S)



code: 12 (S)



code: 13 (H)



code: 14 (S)



code: 15 (S)



code: 16 (H)

## وش بابو خط



600



601



602



603



604



605



606



607



608



## وښ بابو تصميم



101

102

103

104

105

106



107

108

109

110

111

112



113

114

115

## وښ بابو ۲ قايم



200

201

202

203



204

205

206

207



وښ بابې

## میلامین استانیلیس



5008



5009



5010



5011

وښ بابې

## تصمیم CNC



500



501



502



503



504



507



508



509



510



506





2049 (H)



2050 (H)



2051 (H)



2052 (H)



2053 (H)



2054 (H)



2055 (H)



2056 (H)



2057 (H)



2058 (H)



2059 (H)



2060 (H)



2061 (H)



2062 (H)



2063 (H)



2064 (H)



2065 (H)



2066 (H)



2067 (H)



2068 (H)



2069 (H)



2070 (H)



2071 (H)



2072 (H)



2073 (H)



2074 (H)



2075 (H)



2076 (H)



2077 (H)



2078 (H)



2079 (H)



2080 (H)



2081 (H)



2082 (H)



2083 (H)



2084 (H)



2085 (H)



2086 (H)



2087 (H)



2088 (H)



2089 (H)



2090 (H)



2091 (H)



2092 (H)



2093 (H)



2094 (H)



2095 (H)



2096 (H)



2097 (H)



2098 (H)



2099 (H)



2100 (H)